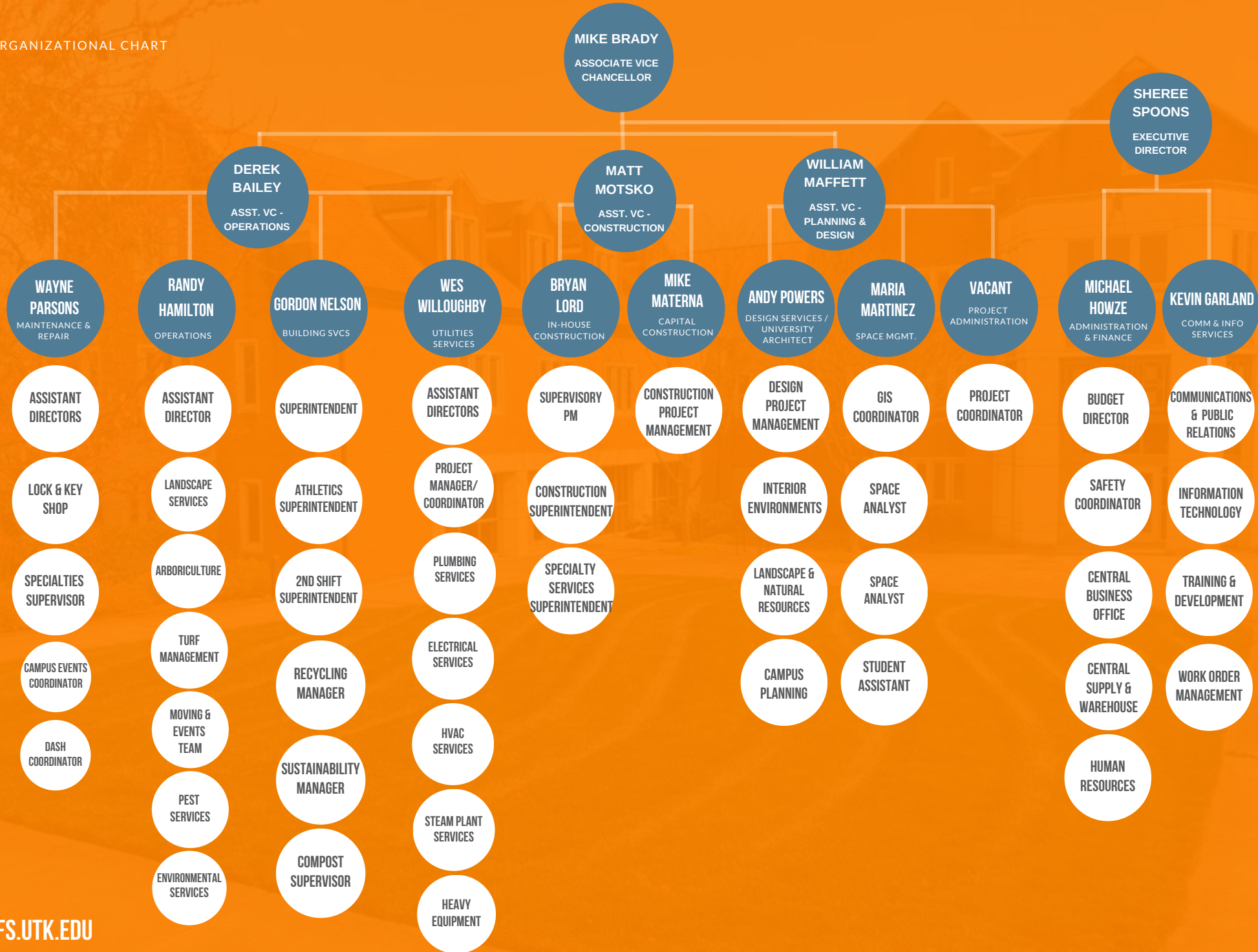
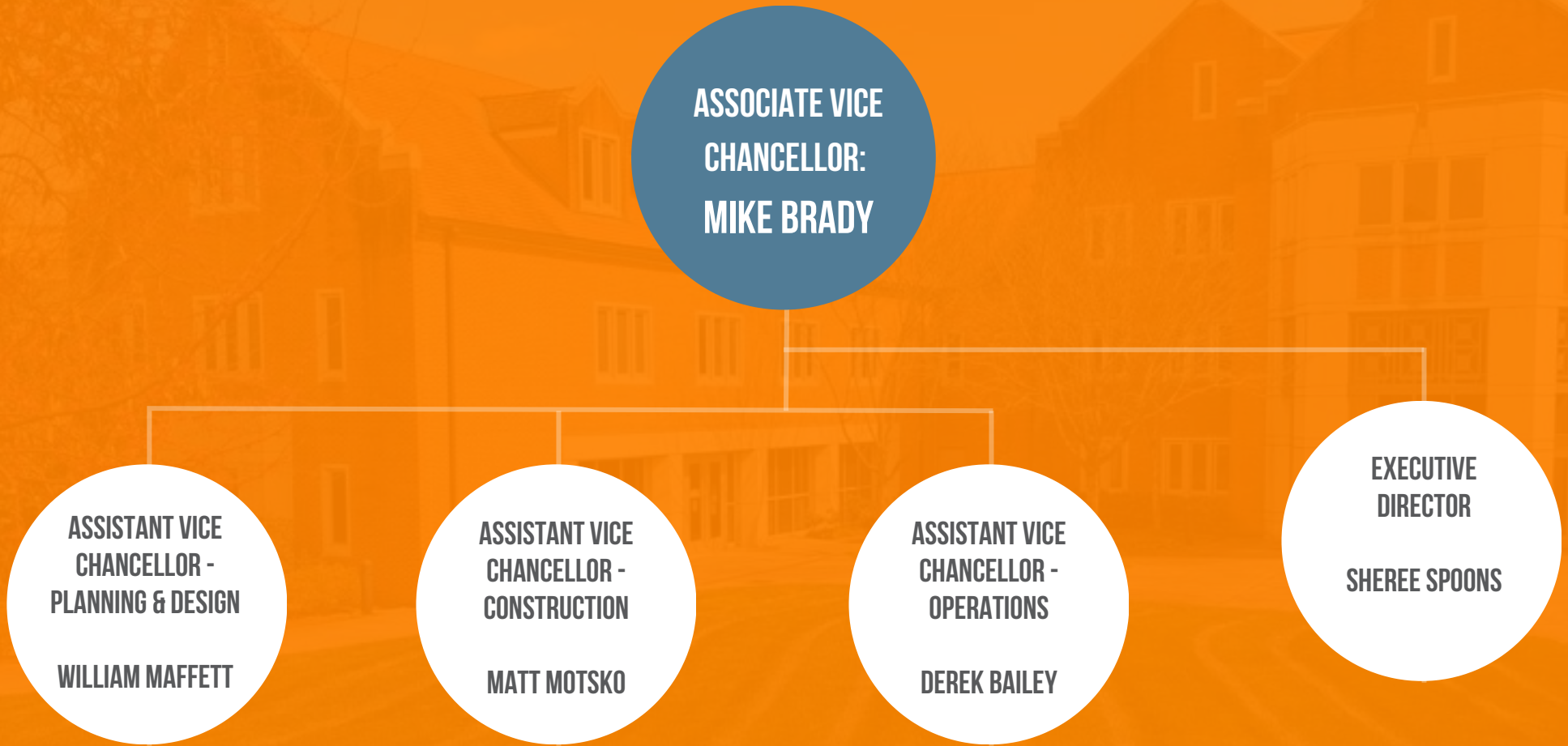


ORGANIZATIONAL CHART





MICHAEL HOWZE
DIRECTOR

**BUSINESS
MANAGER**

**SAFETY
COORDINATOR**

**BUDGET
DIRECTOR**

**HUMAN
RESOURCES
MANAGER**

**CENTRAL
SUPPLY
MANAGER**

**ASSISTANT
MANAGER**

**ASSISTANT
MANAGER, HR**

**WAREHOUSE
SUPERVISOR**

**PROCUREMENT
PROFESSIONAL**

**ACCOUNTING
COORDINATORS**

ACCOUNTANT

BUYER

**ACCOUNTING
ASSISTANT**

**ACCOUNTING
SPECIALIST**

**HR
COORDINATOR**

**MATERIAL
CONTROL
CLERK**

**VEHICLE
OPERATOR**

**ACCOUNTING
SPECIALIST**

**ACCOUNTING
SPECIALIST**

**HR BENEFITS
SPECIALIST**

**MATERIAL
CONTROL
CLERK**

BUYER

**ADMIN
SPECIALIST**

**ACCOUNTING
SPECIALIST**

**HR
SPECIALIST**

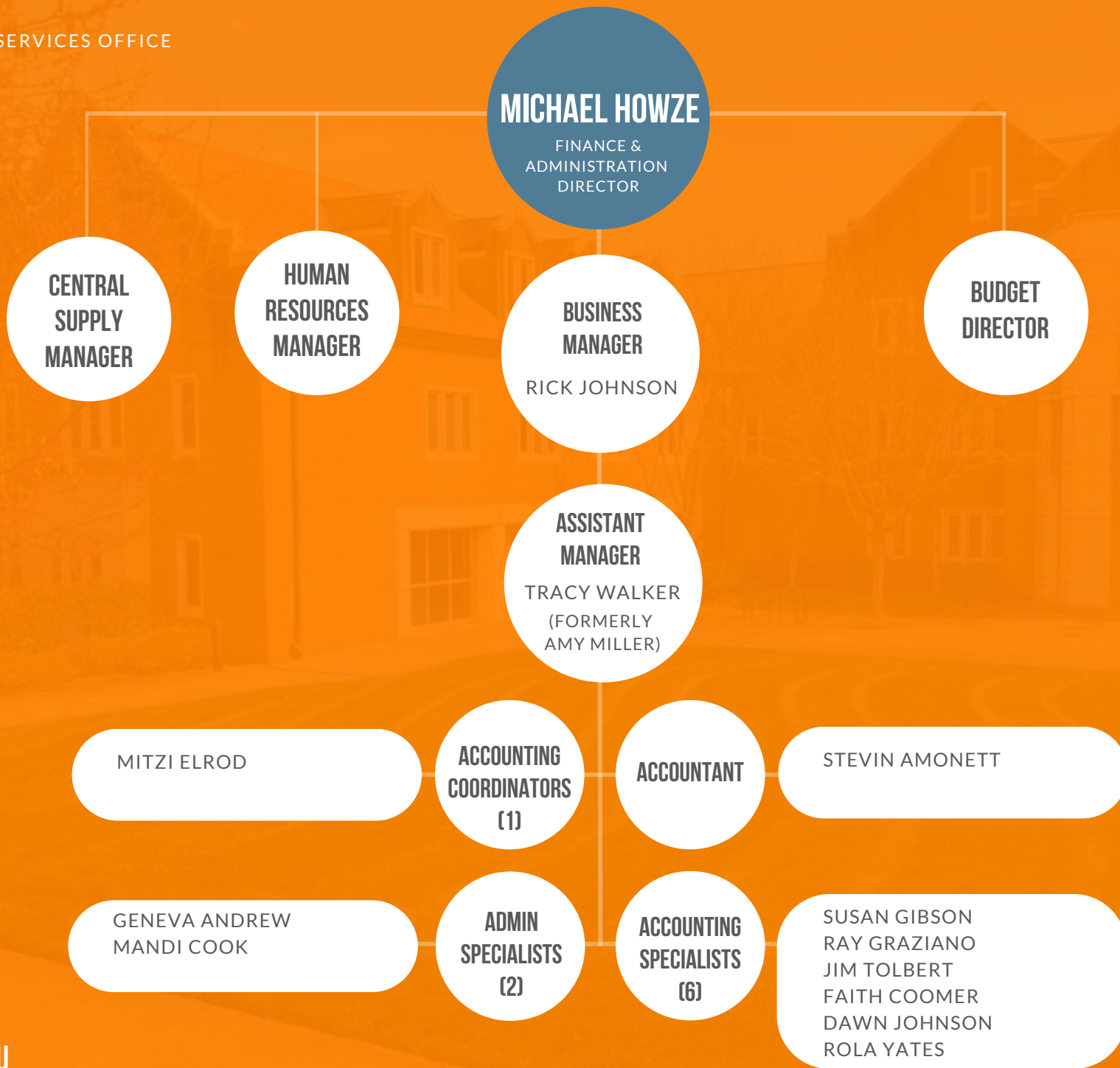
**MATERIAL
CONTROL
CLERK**

BUYER

**ADMIN
SPECIALIST**

**ACCOUNTING
SPECIALIST**

BUYER

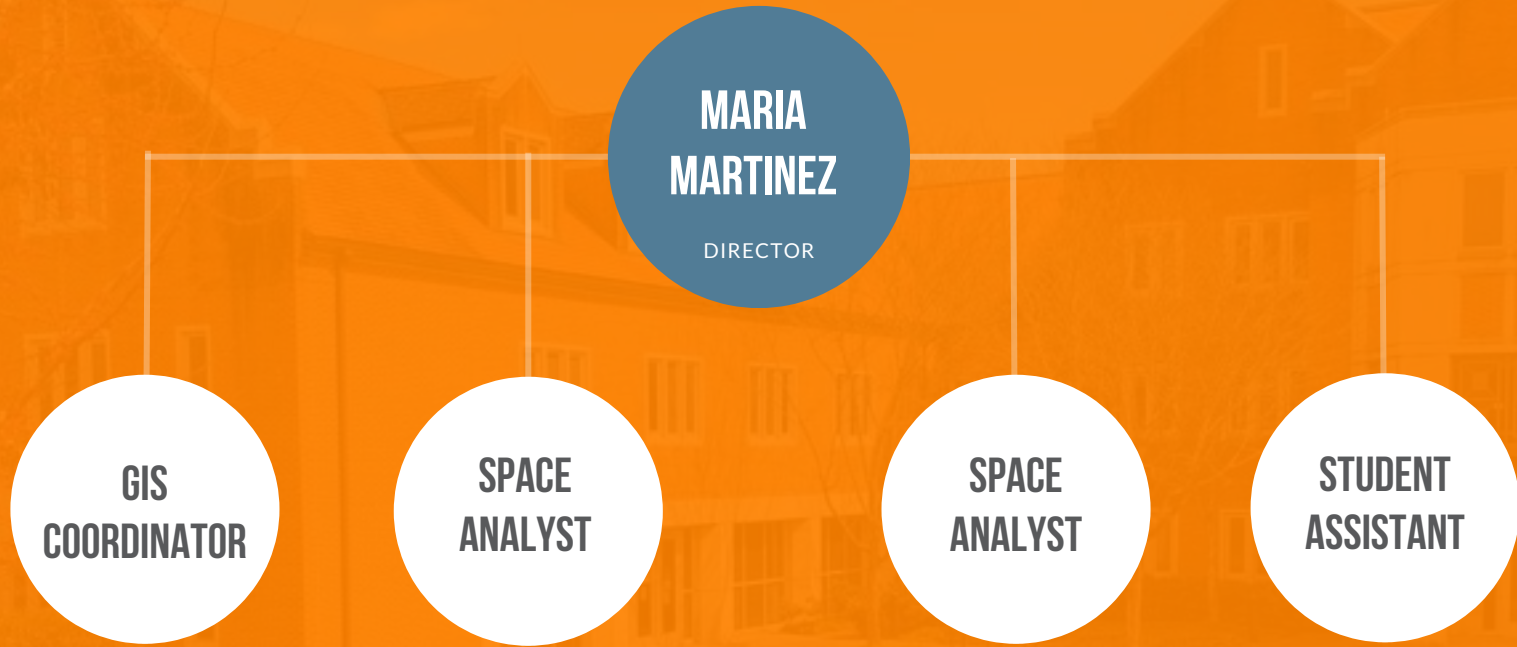




INFORMATION TECHNOLOGY

WORK ORDER MGMT





**BRYAN
LORD**
DIRECTOR

**SUPERVISORY
PROJECT
MANAGER**

**CONSTRUCTION
PROJECT
MANAGERS**

ESTIMATORS

**CONSTRUCTION
SUPERINTENDENT**

FOREMAN

FOREMAN

**SR.
ELECTRICIANS**

**SR.
ELECTRICIANS**

ELECTRICIANS

ELECTRICIANS

**SR.
CARPENTERS**

**SR.
CARPENTERS**

CARPENTERS

CARPENTERS

**SPECIALTY
SERVICES
SUPERINTENDENT**

**PAINT/SIGN
FOREMAN**

**BUILDING
FINISHES
FOREMAN**

**SR.
PAINTERS**

**SR.
CARPENTERS**

PAINTERS II

**SR.
STAR TEAM
MEMBERS**

PAINTERS I

**PRESSURE
WASHING
TECHNICIAN**

CARPENTERS

**SR. SIGN
DESIGN
TECHNICIAN**

**SIGN
DESIGN
SPECIALIST**

**STAR TEAM
MEMBERS**



RANDY HAMILTON

INTERIM DIRECTOR

LANDSCAPE SERVICES

VACANT

ASSISTANT DIRECTOR

*POSITION SHARED WITH UTILITIES SERVICES

TURF MANAGEMENT

LANDSCAPE MANAGEMENT

ARBORICULTURAL SERVICES

TURF MANAGER

MANAGER

ARBORIST

MOVING & EVENTS SERVICES

PEST SERVICES

ENVIRONMENTAL SERVICES

MOWING CREW FOREMEN

IRRIGATION TECH II

LANDSCAPE MECHANIC

LANDSCAPING FOREMAN
5 POSITIONS

SPECIAL PROJECTS FOREMAN
2 POSITIONS

ARBORIST TECHS
2 POSITIONS

SUPERVISOR

PEST SERVICES COORDINATOR

ENVIRONMENTAL SERVICES COORDINATOR

LANDSCAPING GARDENER
10 POSITIONS

IRRIGATION TECH I

TURF SPECIALIST

LANDSCAPE GARDENER
12 POSITIONS

LANDSCAPE GARDENER
4 POSITIONS

M&E TEAM MEMBERS

EXTERMINATORS

ENVIRONMENTAL SERVICES TECHNICIAN

TEMPORARY POSITIONS

TEMPORARY POSITIONS

TRANSFER/HAULING

WES WILLOUGHBY
DIRECTOR

CANDIS SHEEHAN
PROJECT MANAGER

RICK CANNON
PROJECT COORDINATOR

PLUMBING & HEATING SERVICES

SUPERINTENDENT

FOREMEN (2)

STEAM CREW FOREMAN

SR. PLUMBING SPECIALISTS

SR. PLUMBING SPECIALISTS

PLUMBING SPECIALISTS

PLUMBING SPECIALISTS

CONSTRUCTION SPECIALISTS

WELDERS

ELECTRICAL SERVICES FOREMAN

SR. ELECTRICIANS

ELECTRICIANS

HIGH VOLTAGE FOREMAN

SR. ELECTRICIANS

SR. LINE INSTALLERS

ELECTRICIANS

LINE INSTALLERS

ELECTRICAL SERVICES

SUPERINTENDENT

FIRE ALARM & SECURITY SYS. FOREMAN

SR. ELECTRICIANS

SR. ELECTRONICS TECHS

ELECTRICIANS

ELECTRONICS TECHS

SPECIAL EVENTS & PROJECTS FOREMAN

A/C SERVICES

SUPERINTENDENT

HVAC FOREMEN (2)

SR. HVAC SPECIALISTS

HVAC SPECIALISTS

HEAVY DUTY MECHANICS

SR. CONTROLS SPECIALIST

SR. HVAC SPECIALISTS

FOREMAN: COOLING TOWERS/WATER TREATMENT

HVAC ASSISTANTS

MAINTENANCE ASSISTANTS

STEAM PLANT

SUPERINTENDENT

CRAFT SUPERVISOR

SHIFTS 1-3 SR. STEAM OPERATORS

SR. TECHNICAL SPECIALIST

ELECTRICAL/ELECTRONICS TECH

SR. MAINTENANCE SPECIALIST

STEAM PLANT SUPERVISOR

SR. STEAM SPECIALIST

SR. STEAM MECHANICS

CRAFT SPECIALIST MECHANIC

MAINTENANCE ASSISTANT

ACCT. ASSISTANT

WAYNE PARSONS
DIRECTOR

AUX. ASSISTANT DIRECTOR: DAVID CASH

ATHLETICS SUPERINTENDENT

HOUSING FOREMAN

DINING FOREMAN

ATHLETICS FOREMAN

ATHLETICS FOREMAN

BUILDING TECHNICIAN

BUILDING TECHNICIAN

BUILDING TECHNICIAN

BUILDING TECHNICIAN

MAINTENANCE SPECIALISTS

MAINTENANCE SPECIALISTS

MAINTENANCE SPECIALISTS

MAINTENANCE SPECIALISTS

E & G ASSISTANT DIRECTOR: JOHNNY WAGGONER

ELEVATOR MANAGER

GENERAL SUPERINTENDENT

GENERAL SUPERINTENDENT

ZONE 1 FOREMAN

ZONE 2 FOREMAN

ZONE 3 FOREMAN

ZONE 4 FOREMAN

ZONE 5 FOREMAN

ROOFING CONTRACTS

BUILDING TECHNICIAN

BUILDING TECHNICIAN

BUILDING TECHNICIAN

BUILDING TECHNICIAN

BUILDING TECHNICIAN

MAINTENANCE SPECIALISTS

MAINTENANCE SPECIALISTS

MAINTENANCE SPECIALISTS

MAINTENANCE SPECIALISTS

MAINTENANCE SPECIALISTS

PM & SR ASSISTANT DIRECTOR: WALLY BEETS

PREVENTATIVE MAINTENANCE FOREMAN

GENERAL SUPERINTENDENT

ASSET/PM ANALYST

PLUMBING FOREMAN

ADA/LIFT FOREMAN

HVAC FOREMAN

GLASS FOREMAN

ELECTRICAL FOREMAN

LOCK & KEY SERVICES SUPERINTENDENT

ADMIN. SPECIALISTS

LOCKSMITH FOREMAN

LOCKSMITHS & LOCKSMITH SPECIALISTS

GORDON NELSON
DIRECTOR

SUPERINTENDENT: REBECCA CINNAMON

INTERIM SUPERINTENDENT: MARIE LEMONS

ZONE 4
FOREMAN

ZONE 5
FOREMAN

ZONE 7
FOREMAN

ZONE 9
FOREMAN

ZONE 10
FOREMAN

ZONE 11
FOREMAN

ZONE 12
FOREMAN

ZONE 1
FOREMAN

ZONE 2
FOREMAN

ZONE 6
FOREMAN

ZONE 8
FOREMAN

ASSISTANT
FOREMAN

ASSISTANT
FOREMAN

ASSISTANT
FOREMAN

ASSISTANT
FOREMAN

ASSISTANT
FOREMAN

ASSISTANT
FOREMAN

ASSISTANT
FOREMAN

ASSISTANT
FOREMAN

ASSISTANT
FOREMAN

ASSISTANT
FOREMAN

ASSISTANT
FOREMAN

SERVICE
AIDES

SERVICE
AIDES

SERVICE
AIDES

SERVICE
AIDES

SERVICE
AIDES

SERVICE
AIDES

SERVICE
AIDES

SERVICE
AIDES

SERVICE
AIDES

SERVICE
AIDES

SERVICE
AIDES

ATHLETICS/ARENA SUPERINTENDENT: SANDRA BRITT

ATHLETICS
FOREMAN

ATHLETICS
FOREMAN

ATHLETICS
FOREMAN

ASSISTANT
FOREMAN

ASSISTANT
FOREMAN

ASSISTANT
FOREMAN

SERVICE
AIDES

SERVICE
AIDES

SERVICE
AIDES

SUPPLY INVENTORY

INVENTORY
SPECIALIST

RECYCLING

RECYCLING
MANAGER

SUSTAINABILITY

SUSTAINABILITY
MANAGER

COMPOST
SUPERVISOR

AMERICORP
MEMBERS

